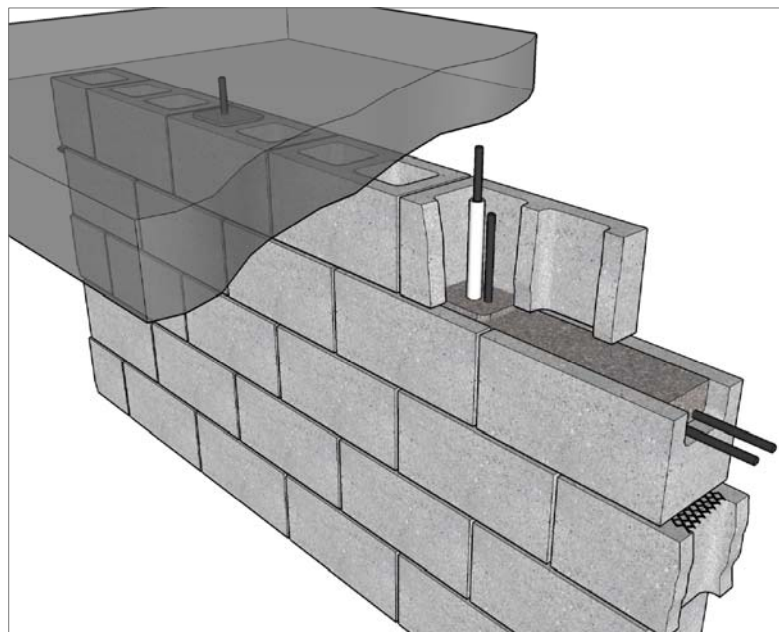


NOTES:

- DOWEL SPACING COINCIDES WITH VERTICAL REINFORCEMENT
- DOWEL FASTENED INTO SLAB WITH INSERTS OR DRILLED HOLE
- DOWEL INCLOSED IN SLEEVE IN GROUTED CELL
- BOND BEAM IN THE SECOND LAST COURSE TO ALLOW SPACE FOR GROUTING
- FIRE STOPPING / SOUND PROOFING MAY BE REQUIRED AT TOP OF WALL TO CLOSE DEFLECTION SPACE



DT.3.2